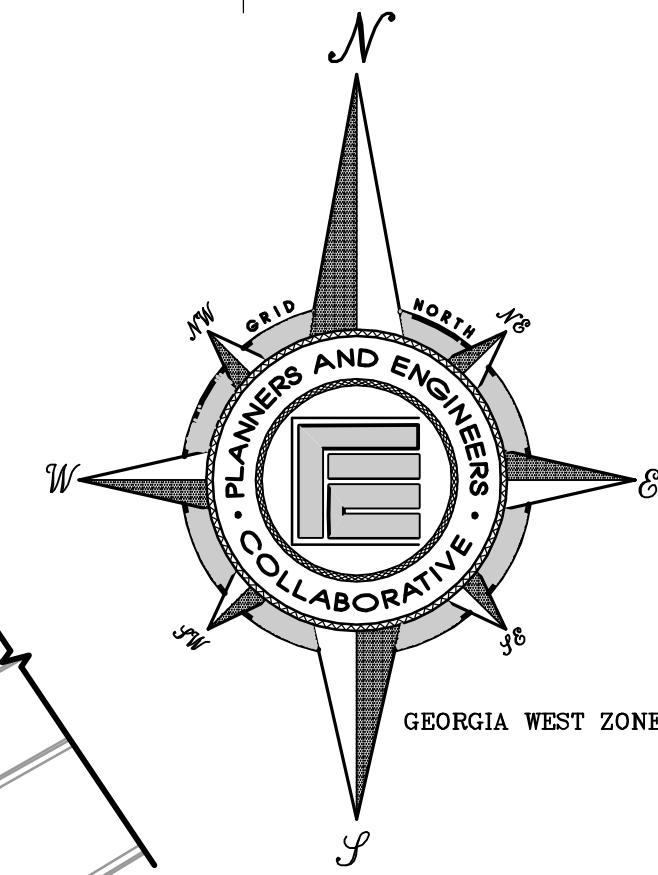
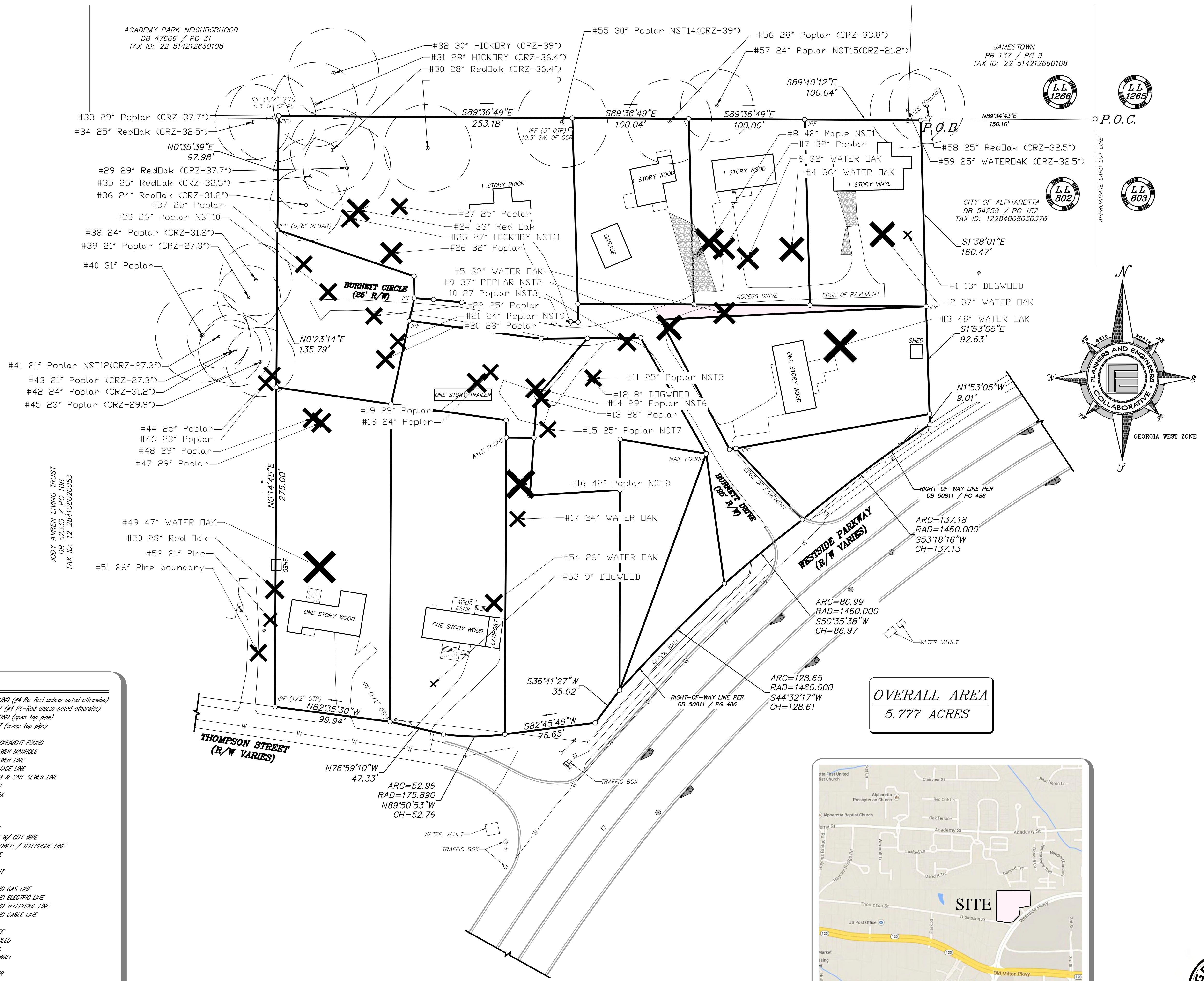


ACADEMY PARK NEIGHBORHOOD
DB 47666 / PG 31
TAX ID: 22 514212660108

JAMESTOWN
PB 137 / PG 9
TAX ID: 22 514212660108

CITY OF ALPHARETTA
DB 54259 / PG 152
TAX ID: 12284008030376

JODY ALVREN LIVING TRUST
DB 52339 / PG 108
TAX ID: 12 284108020053



OVERALL AREA
5.777 ACRES



SITE MAP (NTS)



LEGEND

○ IPF	IRON PIN FOUND (#4 Re-Rod unless noted otherwise)
○ IPF	IRON PIN SET (#4 Re-Rod unless noted otherwise)
○ IPF	IRON PIN FOUND (open top pipe)
○ IPF	IRON PIN SET (crimp top pipe)
○	POINT
□	CONCRETE MONUMENT FOUND
●	SANITARY SEWER MANHOLE
—S—	SANITARY SEWER LINE
---	STORM DRAINAGE LINE
---CS---	COMB. STORM & SAN. SEWER LINE
CB	CATCH BASIN
●/R	JUNCTION BOX
■/DL	DROP INLET
■/RI	WEIR INLET
■/CI	CURB INLET
○	POWER POLE
○	POWER POLE W/ GUY WIRE
—	OVERHEAD POWER / TELEPHONE LINE
○	WATER VALVE
○	GAS VALVE
○	FIRE HYDRANT
—W—	WATER LINE
—G—	UNDERGROUND GAS LINE
—E—	UNDERGROUND ELECTRIC LINE
—T—	UNDERGROUND TELEPHONE LINE
—C—	UNDERGROUND CABLE LINE
○	LIGHT POLE
○	EXISTING TREE
(SOUTH)	CALLS PER DEED
TW	TOP OF WALL
BW	BOTTOM OF WALL
□	WALL (TYP)
○	TRANSFORMER
○	POLE
○	REINFORCED CONCRETE PIPE
B.S.L.	BUILDING SETBACK LINE
—	SIGN
BOC	BACK OF CURB

REV	DATE	DESCRIPTION	BY

TREE SURVEY
DRAWN BY: MCS
CHECKED BY: BJS
DATE: DECEMBER 27, 2016
SCALE: 1"=40'

FULTON COUNTY
GEORGIA

FOR
BURNETT CIRCLE, LLC
CITY OF ALPHARETTA

LAND LOT(S) 802
DISTRICT 12th

PLANNERS AND ENGINEERS COLLABORATIVE
"WE PROVIDE SOLUTIONS"
SITE PLANNING & LANDSCAPE ARCHITECTURE
CIVIL ENGINEERING & LAND SURVEYING
350 RESEARCH COURT PEACHTREE CORNERS, GEORGIA 30092
(770) 451-2741 | WWW.PECCAL.COM