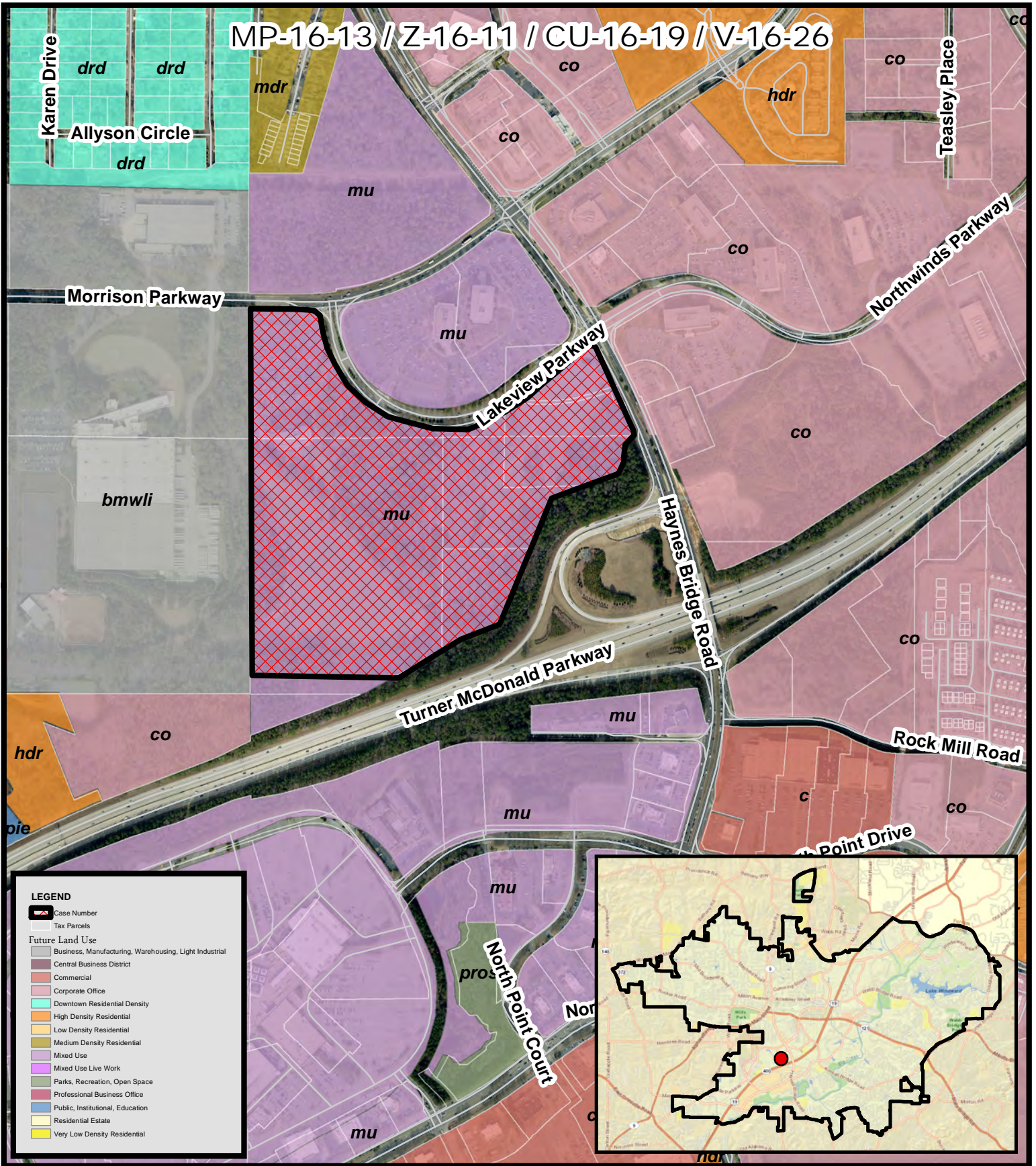


MP-16-13 / Z-16-11 / CU-16-19 / V-16-26



LEGEND

- Case Number
- Tax Parcels
- Future Land Use**
- Business, Manufacturing, Warehousing, Light Industrial
- Central Business District
- Commercial
- Corporate Office
- Downtown Residential Density
- High Density Residential
- Low Density Residential
- Medium Density Residential
- Mixed Use
- Mixed Use Live Work
- Parks, Recreation, Open Space
- Professional Business Office
- Public, Institutional, Education
- Residential Estate
- Very Low Density Residential

Future Land Use
 TPA/ Fuqua Development
 Peridot

MP-16-13 / Z-16-11
 CU-16-19 / V-16-26
 D/LL: 1/2/744, 745, 752, 753
 PC: **03/02/17**
 CC: **04/17/17**



Location Map Provided by:
 Community Development - GIS