

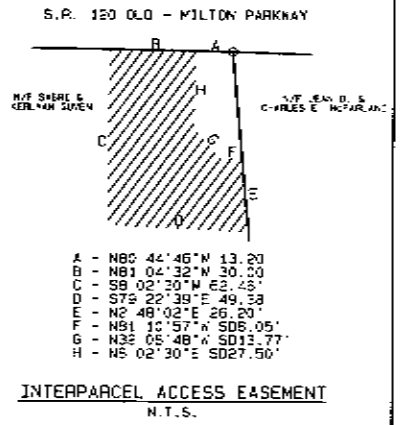
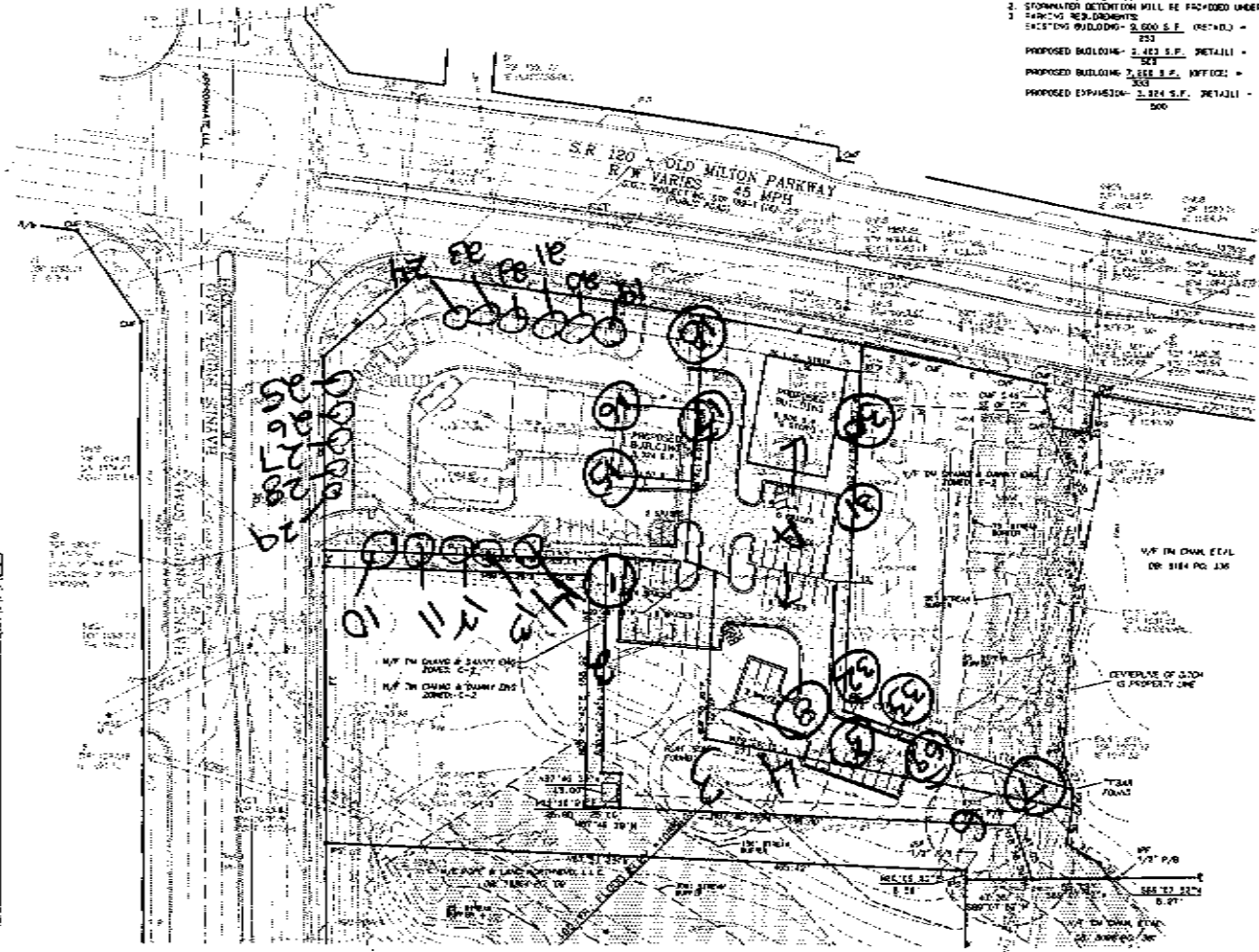
LOCATION MAP

ITE LAND USE CODE	INTERSECT	EXPL. TOTAL	AM PEAK	PM PEAK
			IN	OUT
PE7421122H	5,424 S.F.	273	401	34
PE7421123H	2,300 S.F.	178	25	15
			426	49

NOTES:

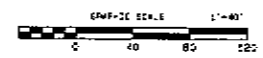
- EXISTING SITE COVERS 1.71 AC. ZONE C-2 (CONDITIONAL) RESIDENTIAL, MOBILE-HOME-89 AC. ZONED R1C1 CITY OF ALPHARETTA, GA.
- STORMWATER DETENTION WILL BE PROVIDED UNDERGROUND.
- PROPOSED BUILDING - 2,423 S.F. (RETAIL) - 36.8 SPACES REQUIRED
- PROPOSED BUILDING - 2,423 S.F. (RETAIL) - 4.8 SPACES REQUIRED
- PROPOSED BUILDING - 2,423 S.F. (OFFICE) - 21.8 SPACES REQUIRED
- PROPOSED EXPANSION - 2,324 S.F. (RETAIL) - 8.8 SPACES REQUIRED
- 70.8 SPACES REQUIRED (TOTAL)
- 84.0 SPACES PROVIDED (TOTAL)

#	BEARING	DISTANCE	AREA	DATE
1	S84°10'00"W	18.23		
2	S82°26'12"E	24.83		
3	S81°31'21"E	215.71		
4	S79°24'21"E	118.30		
5	S79°21'21"E	49.84		
6	S78°14'41"E	96.36		
7	S78°18'21"E	19.31		
8	S80°11'41"E	9.23		
9	S117°33'41"E	43.41		
10	S60°08'41"E	25.34		
11	S47°18'11"E	4.78		
12	S15°31'21"E	1.62		
13	S117°33'37"W	14.32		
14	S14°14'41"E	200.75		
15	S76°51'41"E	3.83		
16	S42°14'21"E	6.81		
17	S14°23'14"E	24.17		
18	S75°34'41"E	28.11		
19	S15°31'21"E	12.23		
20	S27°41'31"E	8.81		
21	S24°11'08"E	11.35		
22	S33°24'15"E	24.84		
23	S32°38'17"E	18.82		
24	S31°38'41"E	4.82		
25	S19°24'08"E	24.11		
26	S14°23'14"E	8.81		
27	S27°38'26"E	14.33		
28	S21°11'12"E	14.33		
29	S03°30'40"E	1.14		
30	S01°24'16"E	18.90		
31	S04°40'41"E	1.14		
32	S37°40'41"E	15.14		
33	N03°14'13"E	1234.90		
34	N04°14'13"E	21.87		
35	N03°41'13"E	242.81		
36	N04°14'13"E	23.95		
37	N04°14'13"E	23.84		



24 HOUR EMERGENCY CONTACT HAMID MASHINCHI @ (404) 275-0996

TOTAL SITE AREA = 1.71 AC. LOCATED IN LAND LOT 749 OF THE 1ST DISTRICT, 2ND SECTION OF ALPHARETTA, GA.



DESIGN: D.J.	DATE: 08/25/2010	SCALE: 1"=40'	PROJECT: OVERALL SITE
DRAWN: S.G.			
CHECKED: S.G.			
DATE: 08/25/2010			

SABRI GUVEN

GUVEN PLAZA

OVERALL SITE